

Analytical software

Presentation of measured and online data • data export • device configuration

Data presentation

Clear presentation of recorded data

For clear reading and processing, user-friendly software is available. It consists of two parts: communication and analysis, which allow you to work with spreadsheets and graphs.

Software interface is intuitive and easy to use, thanks to software wizard. It ensures easy operation even for a beginner who starts working with Monitoring System MS. Software is compatible with Windows®.

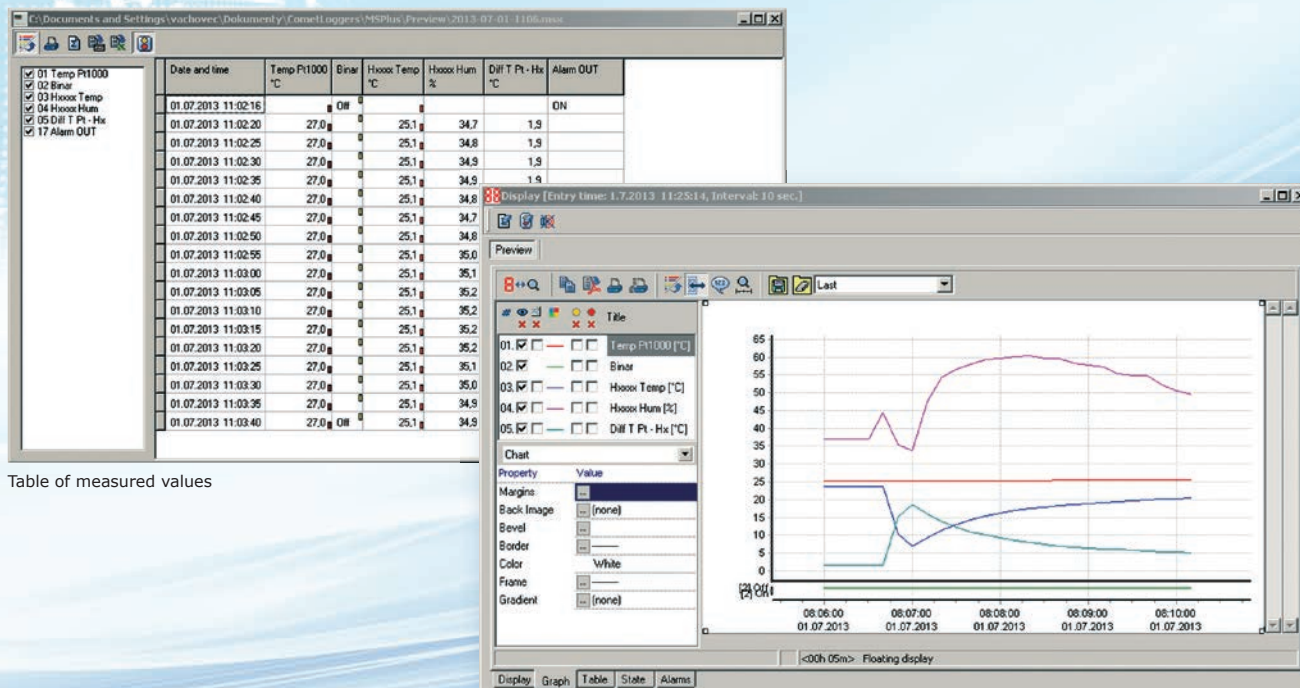
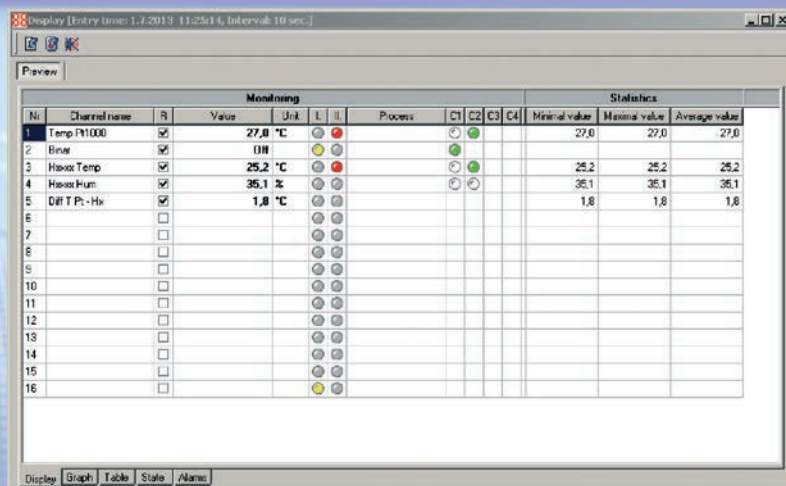


Table of measured values

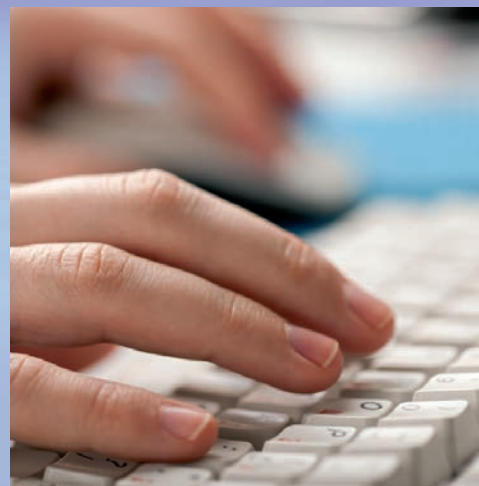
chart of readings

Real time monitoring with software

Monitoring System MS allows users to monitor all monitored sites in real time. Charts, tables and alarms can be displayed in „DISPLAY“ mode. This mode can be shared on multiple computers.

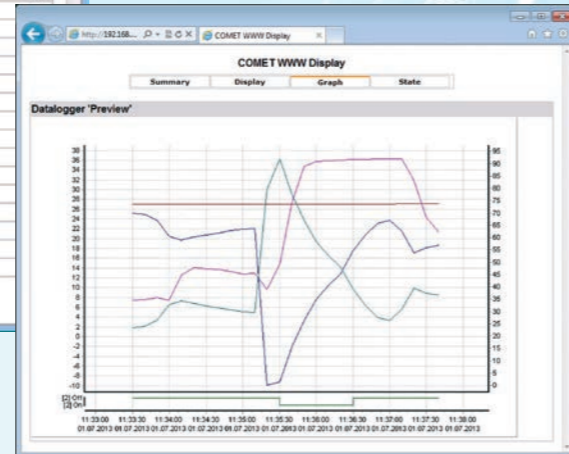
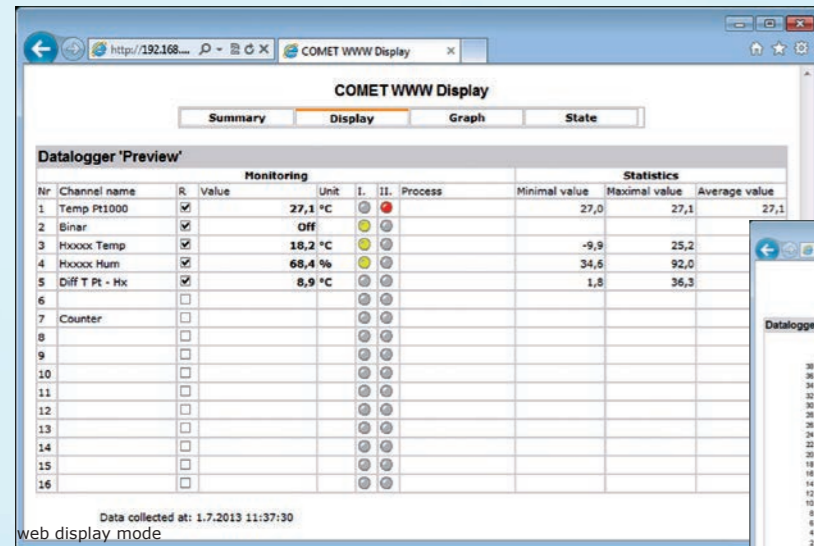


display mode



Data processing via web interface

Current data can be displayed in a web browser using HTML pages. Process of measuring can be simultaneously monitored by several user groups (technicians, management, etc.). Device must be connected to the Internet/Intranet.



data displayed by web browser

Autodownload

Monitoring System MS is able to automatically send the measured data to a computer via the selected communication interface - USB, RS485, Ethernet or GSM modem connected to RS232.

Frequency of automatic reading can be set. This feature is available even if more MS Monitoring Systems are connected together.

MS Communication Settings

A	D	Name	Interface type	Parameters
<input checked="" type="checkbox"/>	<input checked="" type="checkbox"/>	COM1	RS232, USB	COM1, Auto
<input checked="" type="checkbox"/>	<input checked="" type="checkbox"/>	Eth222	Ethernet	TCP/IP, 192.168.1.222:10001
<input checked="" type="checkbox"/>	<input checked="" type="checkbox"/>	Eth25	Ethernet	TCP/IP, 192.168.1.25:10001

Dataloggers

A	D	Name	Serial number	Interface	Parameters
<input checked="" type="checkbox"/>	<input checked="" type="checkbox"/>	Program Options			

Autodownload from datalogger

- Erase datalogger memory after autodownload
 - Erase counter inputs
 - Erase whole memory (data measured during download will be lost)
 - Synchronize time in datalogger with PC system time (may affect state of alarms)

Scheduling

Once a day: Monday, Tuesday, Wednesday, Thursday, Friday, Saturday, Sunday

More than once a day: Interval: 5 min, 10 min, 15 min, 20 min, 30 min, 1 hour, 2 hours, 3 hours, 4 hours, 6 hours, 8 hours, 12 hours

Once a month: First day, Last day, Other day

Time: 09:52:00

settings of autodownload



Statistics

Maximum and minimum values, averages, deviations, and the number of stored values can all be easily and clearly displayed in table mode.

Export

The software allows for easy export of measured data to XLS or DBF files.

MS55/MS6 Configuration

Measured input value

Select the measured value according to the connected hardware, set the measuring range and units (type MS55D is limited only to fitted input modules). Additional settings are available for some input types (eg. counters, RS485 input, etc.).

Measured quantity: A0 (4..20 [mA])

Channel name: 16: Meteorstation

Physical unit: °C

Number of decimal places: 1

Recalculation

- Recalculation measured value
- Input value: 4.00 will be shown as: -30.00 °C
- Input value: 20.00 will be shown as: 80.00 °C

Conditions settings example

Example conditions derived from the measured values

The condition is valid if input value exceeds 170 °C and this state persists at least 30 seconds. Condition expires immediately if the temperature drops below 168 °C.

Condition 1

Start of validity: Input value > 170.0 °C for the duration of 30 s

End of validity: value returns back with hysteresis 168.0 °C together with expires 0 s

In the case of input error (measured value is not available): condition remains invalid

Example of condition derived from the time

The condition is valid, if the current date and time fulfill selected criteria.

Condition 1

Start of validity: Valid in time interval

valid only in interval

valid daily in time interval

from 06:00:00 to 14:00:00

from 00:00:00 22.08.2007 to 00:00:00 23.08.2007

valid on selected days: Monday, Tuesday, Wednesday, Thursday, Friday, Saturday, Sunday

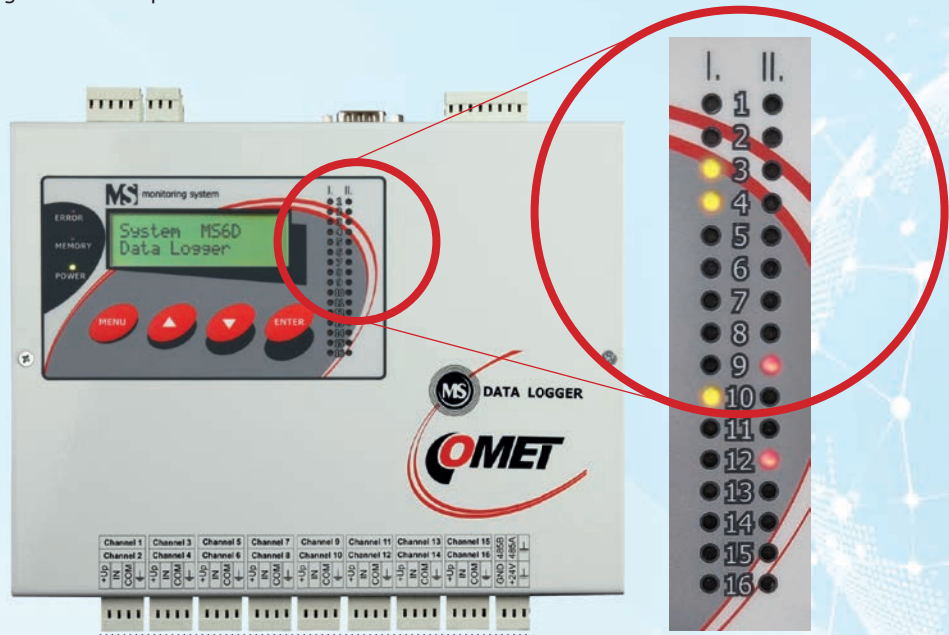
The condition can be controlled using a personal computer, web browser, or SMS. It can be protected by a password.

Condition 1

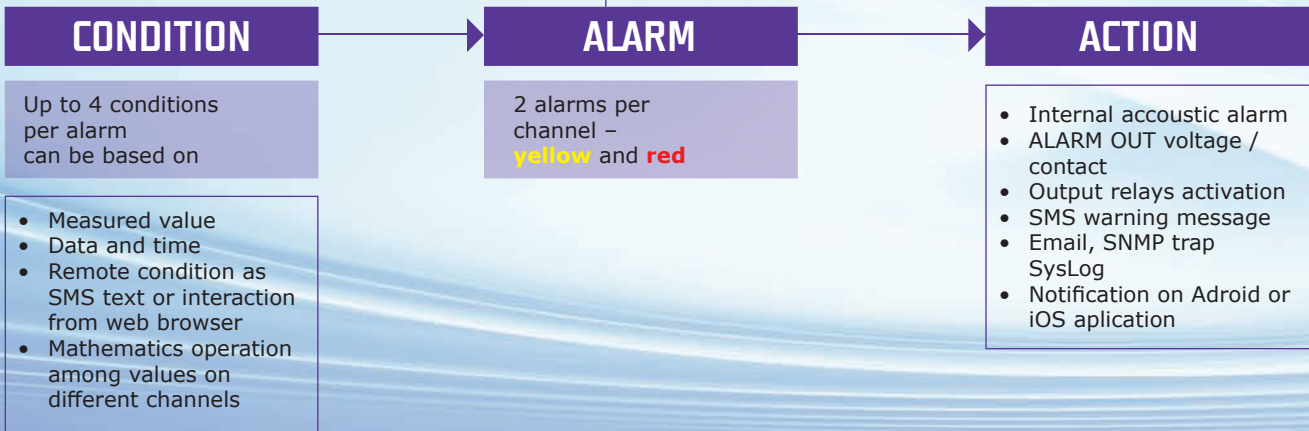
Start of validity: Set remotely from PC

Alarm creation on input channels

The MS Monitoring System features a 16-channel data logger, with each channel equipped with two alarms, yellow and red. Each alarm can be triggered by up to four distinct conditions, allowing for comprehensive monitoring. Once activated, these alarms can prompt a range of follow-up actions.



MS Monitoring System has up to 16 measuring channels



Actions in case of alarm

Alarm 1

Alarm will be activated, when valid:

Condition 1 on this channel

Activated alarm switch on yellow LED (I.) on this channel and following actions will be executed:

- activate internal acoustic signalization
- activate ALARM OUT signalization

Send SMS message to phone numbers:

- +420156324779
- +421256897663

Switch ON output relay no.:

- 1
 2
 3
 4
 5
 6
 7
 8
 9
 10
 11
 12
 13
 14
 15
 16

Send e-mail message to addresses:

- test@cometsystem.cz
- my.name@gmail.com